

# Deep Engineering Works

Manufacturing all kinds of Industrial Machinery Spares



Since 1973

JANTA MARKET, KAPOOR COMPOUND, NEXT TO METRO, SUBHASH RD, BHANDUP (W) MUMBAI 400 078.  
TEL. 25947588 FAX : 25801290 MOBILE : +919820627243 EMAIL : MAIL@DEEPENGG.IN

[www.deepengg.in](http://www.deepengg.in)

# Deep Engineering Works

Manufacturing all kinds of Industrial Machinery Spares



Since 1973



**Manufacturing** all kinds of machine components and spares as per drawing or as per sample using Indian Standard specifications, we providing services to major **Steel Industry**, Wire & Cable Industry and Pharmaceutical machine manufacturers since 1973.

We have a composite workshop and most sophisticated tool room which guarantees high standard and maximum possible accuracy of the job.

Providing services to major companies manufacturing Bright Bar, Pipes, Pharmaceutical Machinery, Wire Rods, Cables, Billets, and Steel Rolls we provide manufacturing, repairing and maintenance services and on-time deliveries to customers across India.

## We make Machinery Spares for : LIST OF CLIENTS



### ● Bright Bar Industry



### ● Bar Mill Plant

### ● Wire Rod Mill

### ● Blooming Mill

### ● SMS Plant



### ● Strip Rolling Mill

### ● Wire & Cable Industry

- Mukand Ltd.
- JSW Steel Ltd.
- Sunflag Iron & Steel Ktd.
- Usha Martin Ltd.
- Bhansali Bright Bar Pvt. Ltd.
- Sterlite Industries.
- Panchmahal Steels Ltd.
- Shah Alloys Ltd.
- RimJhim Ispat Ltd.
- Zenith Birla India Ltd.
- KEC International
- Viraj Profiles Ltd.
- Hind Rectifiers Ltd.
- Jyoti Steels Ltd.
- Pharmalab India Pvt. Ltd.



Unit 1 : Thane  
A5, Omsai Industrial Complex, Wagle Estate,  
Thane (West) Maharashtra 400604  
Unit 2 : Mumbai  
Janta Market, Kapoor Compound, Next to Metro,  
Bhandup (West) Maharashtra 400078



Ledges Block



Angle Block



Burnishing Rollers



Rollers



Tool Holder



Pulley Wheels



Pulling Jaws



Piston Rod, Bolt



Coupling



Polishing Disc



Gripper



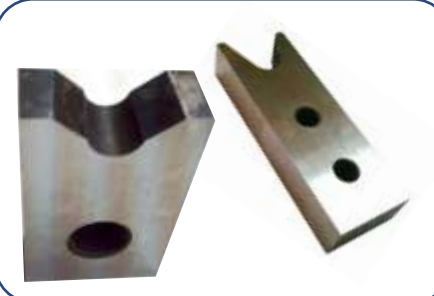
Roller



Brass Sleeve, Bush



Cutting Knife



Shear Blades





Burnishing Roller



Blade



SS Nut



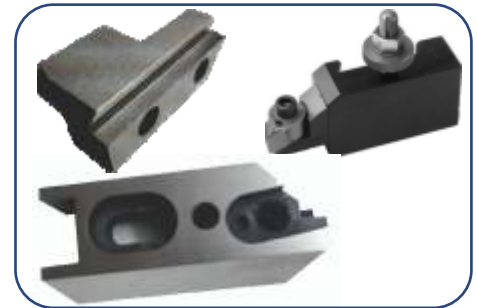
Screw Shaft



GM Bed Plate



Tool Holder



Roller, Breaker Plate



Wheel, Rings



Shaft, Nozzle



Nut Bolt, Stud, Barrel



Piston Rod



Cutting Bush, Nozzle



Sprocket, Spares



Coupling



Entry Guide, Pin



Assembly Spares



Other Spares



Nut / Bolt / Circlips



Roller Assembly



SS Nut (Socket)



Bush Cover



Hex Shear Bush



Carriage with Gripper



Casting, PB Sleeve



Nut Bolt, Stud, Barrel



Bush Bearing Cover



Couplings



Round Shear Bush



Peeling Head



Labyrinth Ring



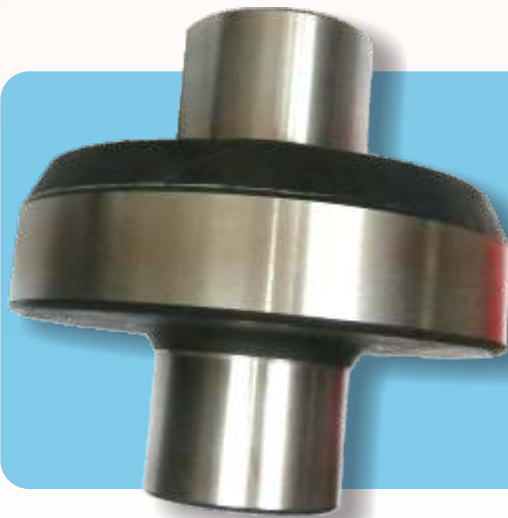


## Machine Spares we mfg. -

- Pinch Rollers
- Cutter Head
- Gripper
- Gripper Holder
- Pulling Jaw
- Ledges Patti
- Shoe
- Polishing Disc
- Nozzle
- Sleeve
- Coupling
- Rollers
- Shafts
- Pulley
- Pin
- Nut Bolt
- Tool Holder
- Shear Blade
- Shear Knife
- Spiral Bevel Gear
- Pinion
- Sprocket
- Worm
- Worm-Shaft
- Burnishing Roller
- Foundation Hex Bolt
- Allen Bolt & Nut
- Breaker Plate

## Raw Material we use -

- Mild Steel
- Stainless Steel 304, 310
- High Speed Steel
- Spring Steel
- WPS Steel
- D2 Steel
- Alloy Steel
- High Tension Steel
- Brass
- Aluminium
- Copper
- Ph Bronze
- Gun Metal
- Fiber Nylon
- Teflon



The company has many years of experience providing excellent service to various clients in the medium and heavy industry.

Machining of different high precision spare parts and components based on the drawings or sample. E.g shafts, blades, rollers, etc.

## LIST OF MACHINERY

Center Lathe Machine	- Qty - 6
Horizontal Boring Machine	- Qty - 2
Vertical Milling Machine WMW Germany	- Qty - 2
Alcera - France Universal Milling Machine	- Qty - 2
Gambin - Universal Milling Machine	- Qty - 1
Cincinnati - England Tool & cutter	- Qty - 1
Shaping Machine	- Qty - 1
Alex Surface Grinding Machine	- Qty - 1
Welding Machine	- Qty - 1
Drill Machines	- Qty - 3
Radial Drill	- Qty - 1
Measuring Instruments	- Qty - 12
Harding Testing Machine (Fine)	- Qty - 1

